



Fusar Bassini Astorre e C. Snc MIXER FB SERIES



Capacity:

From 7 KW to 1860 KW
From 6000 Kcal/h to 160000 Kcal/h)

DESCRIPTION

Mixer FB Series are air/gas mixing devices. FB premixers utilize the Venturi effect in order to obtain a very good mixing of the gas flow (induced fluid) with the air flow (inducer fluid) in the premix burner combustion systems. The air/gas feedings to the premixer are controlled singularly; the capacity regulation of the premixer is executed by means of a motorized or manual butterfly valve disposed on the piping of the combustion air and by means of a zero-governor disposed on the piping of the gas; FB premixer is supplied complete of micrometric gas-adjuster.

FEATURES

Type of gas : natural gas, LPG
Max gas pressure: 150 mbar
Max air pressure : 150 mbar
Temperature range : -10°C to + 100°C

INSTALLATION

FB premixer can be installed in whichever position.

CAUTION: it is absolutely forbidden to interpose interception or regulation devices between the premixer and the burner heads.

CAUTION: Pilot burner, main burner and the automatic burner control unit must be designed, installed and setted meeting the law regulations in force.

Fusar Bassini Astorre e C. Snc

GAS BURNERS AND COMPONENTS FOR COMBUSTION SYSTEMS

Via P.M. Ferrè, 14 -26013 CREMA (CR) Tel/Fax 0373-257594 web: www.fusarbassini.it e-mail: info@fusarbassini.it



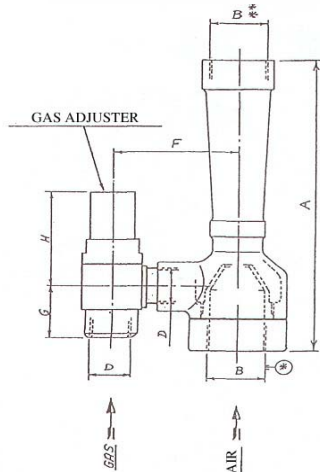


Fusar Bassini Astorre e C. Snc

MIXER FB SERIES

PREMIXER FB-5 FB-10 FB-18

TECHNICAL DATA



Housing : brass and steel

Air-gas injector : steel

Threaded connections

MIXER Size	A mm	B " GAS	D " GAS	F mm	G mm	H mm
FB-5	280	1" 1/4	3/4"	100	50	120
FB-10	300	1" 1/2	3/4"	106	50	120
FB-18	350	2"	1"	115	50	120

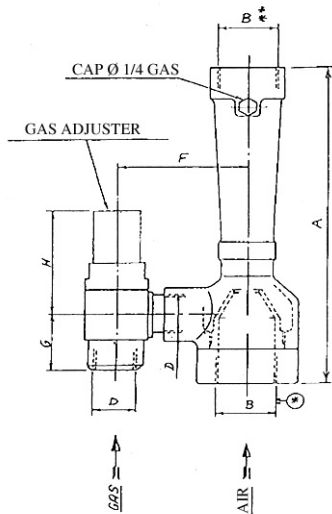
CAPACITY : The capacity of an FB mixer depends by air pressure gauged upstream of the mixer *, by its size, its injector, by the size and number of burners or nozzles through which it fires and by the field conditions under which it operates.

MAX CAPACITY Kcal/h with standard injector, WITH AIR PRESSURE IN mbar

MIXER Size	INJECTOR Standard	10 mbar	20 mbar	30 mbar	40 mbar	50 mbar	60 mbar	70 mbar	80 mbar
FB-5	18	30000	41000	50000	59000	65000	71000	76000	82000
FB-10	21	40000	55000	67000	79000	86000	95000	102000	110000
FB-18	26	60000	85000	106000	121000	137000	150000	162000	173000

PREMIXER FB-27 FB-40 FB-50

TECHNICAL DATA



Housing : cast iron

Air-gas injector : cast iron

Threaded connections

MIXER Size	A mm	B " GAS	D " GAS	F mm	G mm	H mm
FB-27	390	2" 1/2	1" 1/4	140	60	125
FB-40	415	3"	1" 1/2	150	60	125
FB-50	640	4"	2"	175	77	140

CAPACITY : The capacity of an FB mixer depends by air pressure gauged upstream of the mixer *, by its size, its injector, by the size and number of burners or nozzles through which it fires and by the field conditions under which it operates.

MAX CAPACITY Kcal/h with standard injector, WITH AIR PRESSURE

IN mbar

MIXER Size	INJECTOR Standard	10 mbar	20 mbar	30 mbar	40 mbar	50 mbar	60 mbar	70 mbar	80 mbar
FB-27	32	92000	130000	160000	185000	203000	226000	244000	262000
FB-40	40	145000	200000	250000	289000	323000	354000	382000	410000
FB-50	52	245000	342000	424000	490000	545000	600000	645000	692000

The Kcal/h indicates on chart are available for Natural gas.

The value indicate must be reduced of the 7,4% to obtain the Kcal/h LPG

CAUTION: The combustion system must be designed and installed meeting the law regulations in force. If the installation, the use and the maintenance are not carried out correctly, severe damages to things or persons might occur.

Fusar Bassini Astorre e C. Snc

GAS BURNERS AND COMPONENTS FOR COMBUSTION SYSTEMS

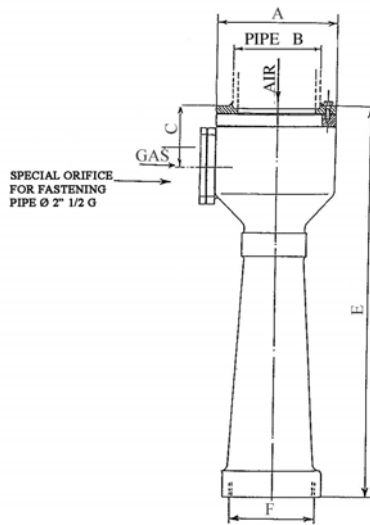
Via P.M. Ferrè, 14 -26013 CREMA (CR) Tel/Fax 0373-257594 web: www.fusarbassini.it e-mail: info@fusarbassini.it





Fusar Bassini Astorre e C. Snc

PREMIXER FB-80 AND FB-110



PREMIXER FB-80 and FB-110

GASES: * Natural gas to be specified with order
* Liquid gas – LPG

GAS PRESSURE: 500 – 800 mm H₂O

CAPACITY: The burner capacity depends EXCLUSIVELY by air pressure, gauged upstream of the burner

MIXER Size	Ø A mm	PIPE Ø B " GAS	C mm	E mm	Ø F " GAS
FB-80	200	5"	110	680	5"
FB-110	230	6"	120	760	6"

MIXER Size:	AIR INJECTOR Ø mm	BURNER CAPACITY Kcal/h WITH AIR PRESSURE IN mm H ₂ O							
		100	200	300	400	500	600	700	800
FB-80	62	288000	405000	495000	575000	640000	700000	755000	810000
FB-110	75	430000	610000	745000	850000	960000	1050000	1140000	1200000

The Kcal/h indicates on chart are available for Natural gas

The value indicate must be reduced of the 7,4% to obtain the Kcal/h LPG

Fusar Bassini Astorre e C. Snc

GAS BURNERS AND COMPONENTS FOR COMBUSTION SYSTEMS

Via P.M. Ferrè, 14 -26013 CREMA (CR) Tel/Fax 0373-257594 web: www.fusarbassini.it e-mail: info@fusarbassini.it

